

A photograph of a railway track stretching into the distance, flanked by a dense forest of tall evergreen trees. The sky is overcast and grey. The text is overlaid on the top half of the image.

# RAIL CONTAINER SERVICES BETWEEN EU AND CHINA: INTEGRATION AS THE KEY SUCCESS FACTOR

ALEXEY GROM, UTLC ERA PRESIDENT & CHAIRMAN OF THE BOARD



EURASIAN LOGISTICS INTERNATIONAL SEMINAR  
“NEW ERA OF THE EURASIAN TRANSIT”  
CHENGDU, 29 NOVEMBER 2018

#ENJOYTHERAIL

# WE CELEBRATE TOGETHER 3000<sup>th</sup> CONTAINER TRAIN BETWEEN CHINA - EU



The 3000<sup>th</sup> train was sent on the services of JSC UTLC ERA in November 2018.

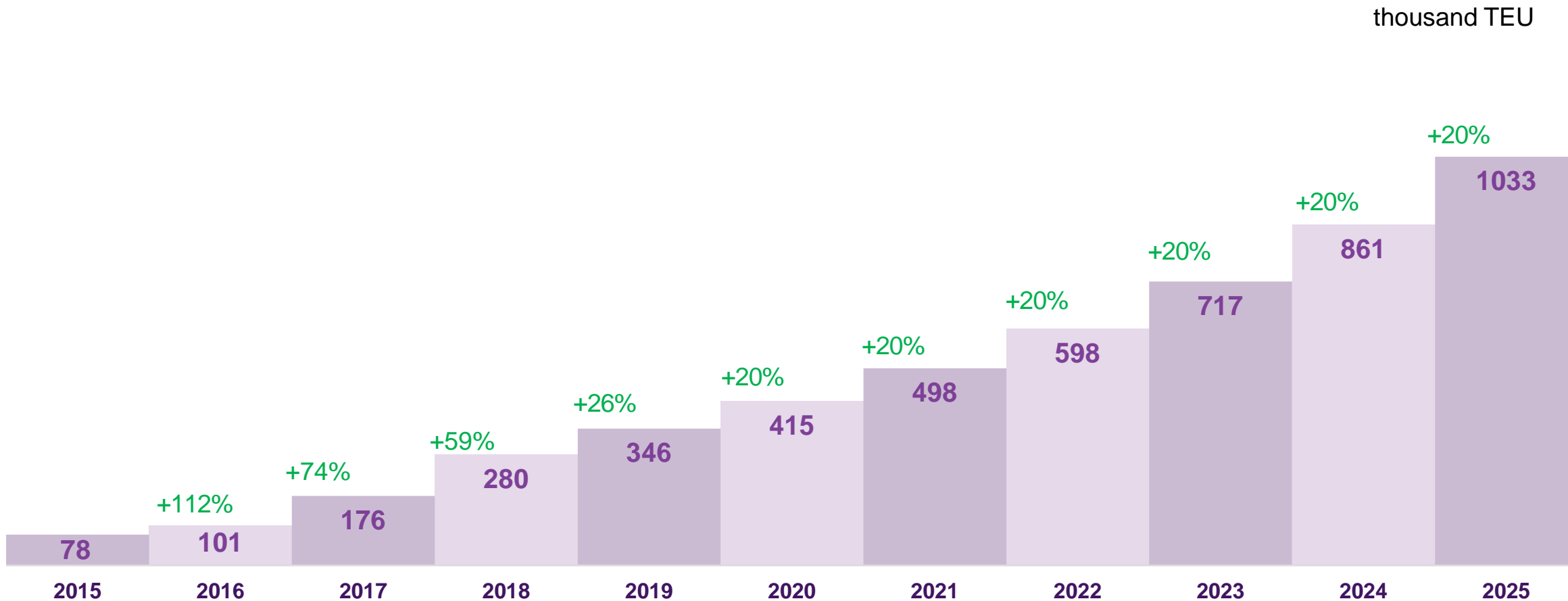


Route of 3000<sup>th</sup> train: Nuremberg – Chengdu.



Such a result is possible only because of the common efforts of all participants on the international transport market in the framework of the national strategies and programs of China, Kazakhstan, Russia, Belarus and the European Union of Eurasian railway transportation.

# ONE BELT, ONE ROAD, ONE MILLION



# ROUTES IN UTLC ERA SERVICES IN 2018

## U WEST

### China - Europe

<b>Chengdu</b> – Kutno / Lodz / Nuremberg / Tilburg / Kolyadichi / Malaszewicze / Budapest / Warsaw
<b>Chengdu</b> - Milan
<b>Chongqing</b> – Hamburg / Duisburg / Warsaw / Malaszewicze
<b>Wuhan</b> – Hamburg / Duisburg / Gorzow / Malaszewicze / Pardubice
<b>Iwu</b> – London / Madrid / Prague / Malaszewicze
<b>Xining</b> – Antwerp
<b>Xian</b> – Kouvola / Budapest / Malaszewicze / Hamburg
<b>Taiyuan / Urumqi / Wuhi</b> – Duisburg / Malaszewicze
<b>Hefei</b> – Hamburg
<b>Zhengzhou</b> – Hamburg, Munich
<b>Shenzhen</b> – Malaszewicze
<b>Xiamen</b> – Malaszewicze / Hamburg / Budapest
<b>Taishan</b> – Antwerp

## U EAST

### Europe - China

<b>Hamburg</b> – Wuhan / Kuitun / Xian / Hefei / Zhengzhou / Chongqing
<b>Duisburg</b> – Chongqing / Iwu / Kuitun (Korla) / Wuxi / Kashi / Lanzhou / Xian / Urumqi
<b>Hamburg</b> / Duisburg / Kolyadichi – Chengdu
<b>Lodz / Nuremberg / Tilburg</b> / Malaszewicze / Kutno – Chengdu
<b>Milan</b> - Chengdu
<b>Melzo</b> - Chengdu
<b>Kouvola</b> - Xian
<b>Gent</b> - Chengdu
<b>Madrid / Prague</b> – Iwu
<b>Malaszewicze</b> – Chongqing / Kuitun / Chengdu
<b>Munich</b> – Zhengzhou
<b>Warsaw</b> / Poznan – Chongqing
<b>Mangheim</b> – Chongqing
<b>Liege</b> – Zhengzhou

# CAPACITY OF RAIL INFRASTRUCTURE ON UTLC ERA ROUTES

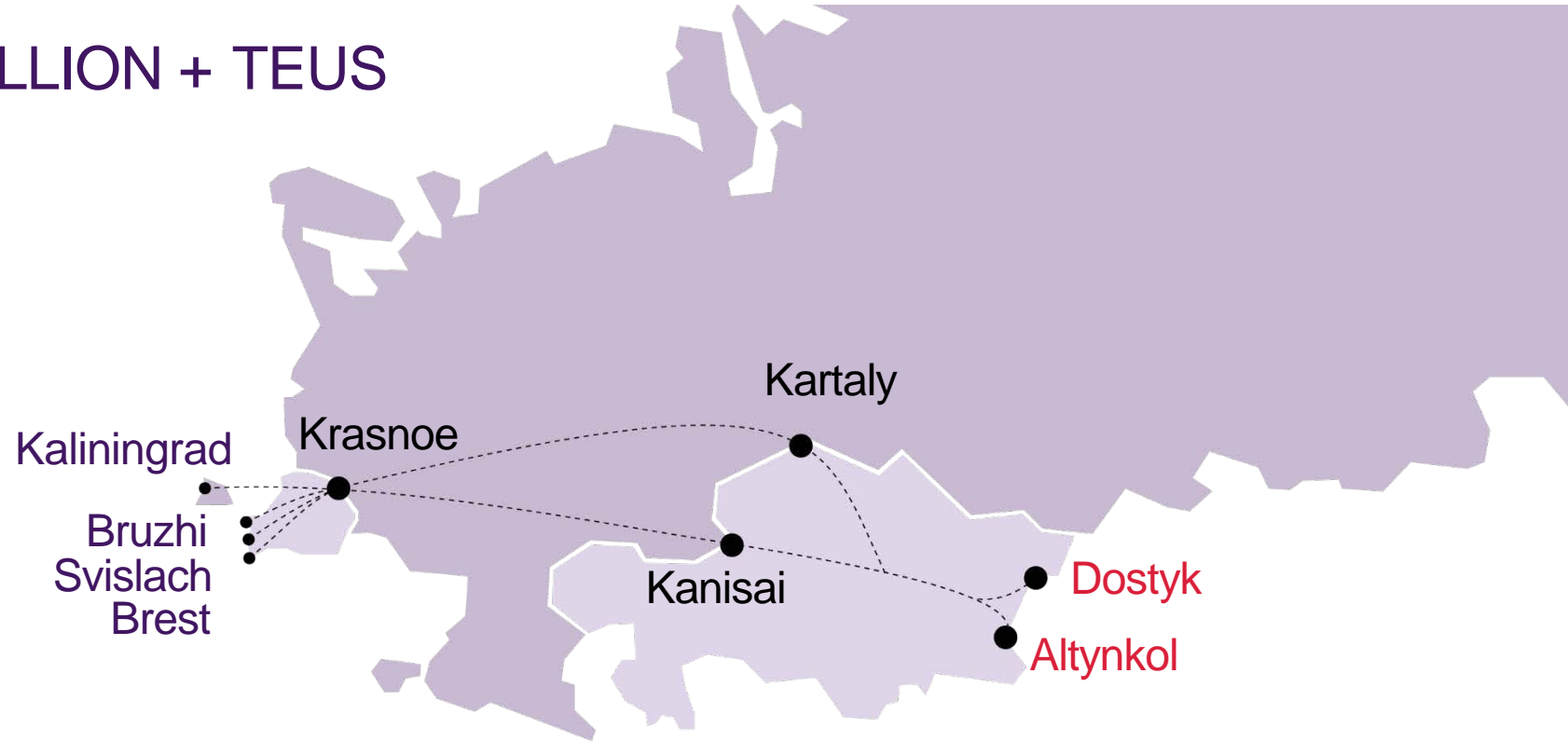
ALLOWS TO HANDLE 1 MILLION + TEUS

**Dostyk/Altynkol – Kanisai –  
Krasnoe – Brest/Bruzhi/Svislach**  
Up to 10 pairs of trains/day

**Dostyk/Altynkol – Kartaly –  
Krasnoe – Brest/Bruzhi/Svislach**  
Up to 10 pairs of trains/day

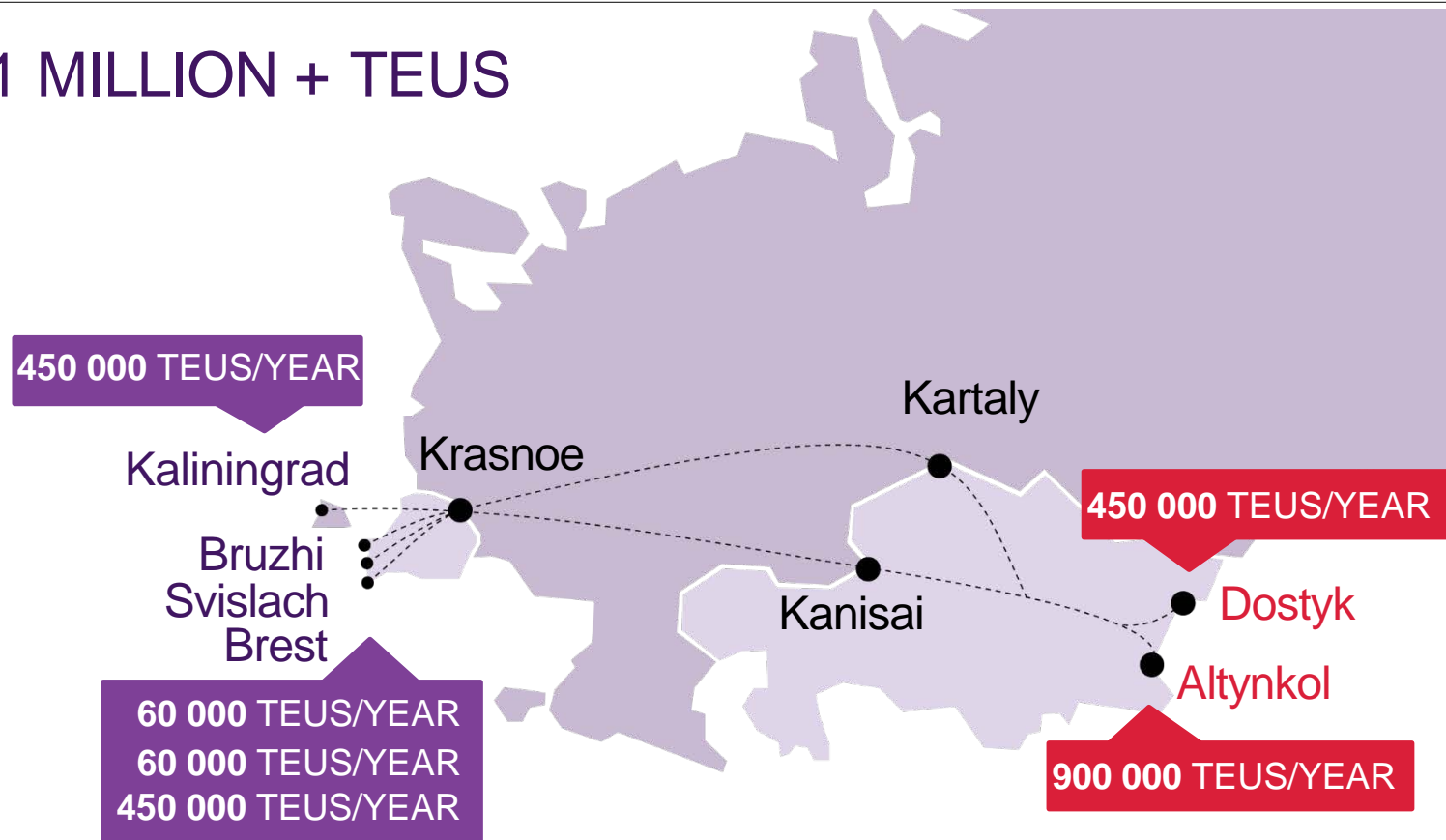
Max capacity of 1520 mm gauge – up to  
600 000 TEUs through **Kanisai**  
600 000 TEUs through **Kartaly**

**Maximum capacity  
1.2 million TEU**



# CAPACITY OF **BORDER TERMINALS** ON UTLC ERA ROUTES

ALLOWS TO HANDLE 1 MILLION + TEUS



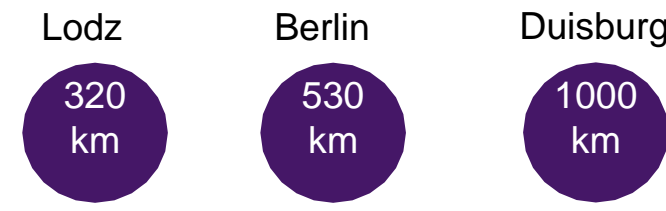
# WHY KALININGRAD?

	Kaliningrad «Dry»	Kaliningrad «MM»
Max frequency of trains per day	16	8
Max capacity, TEU per year	450 000	300 000

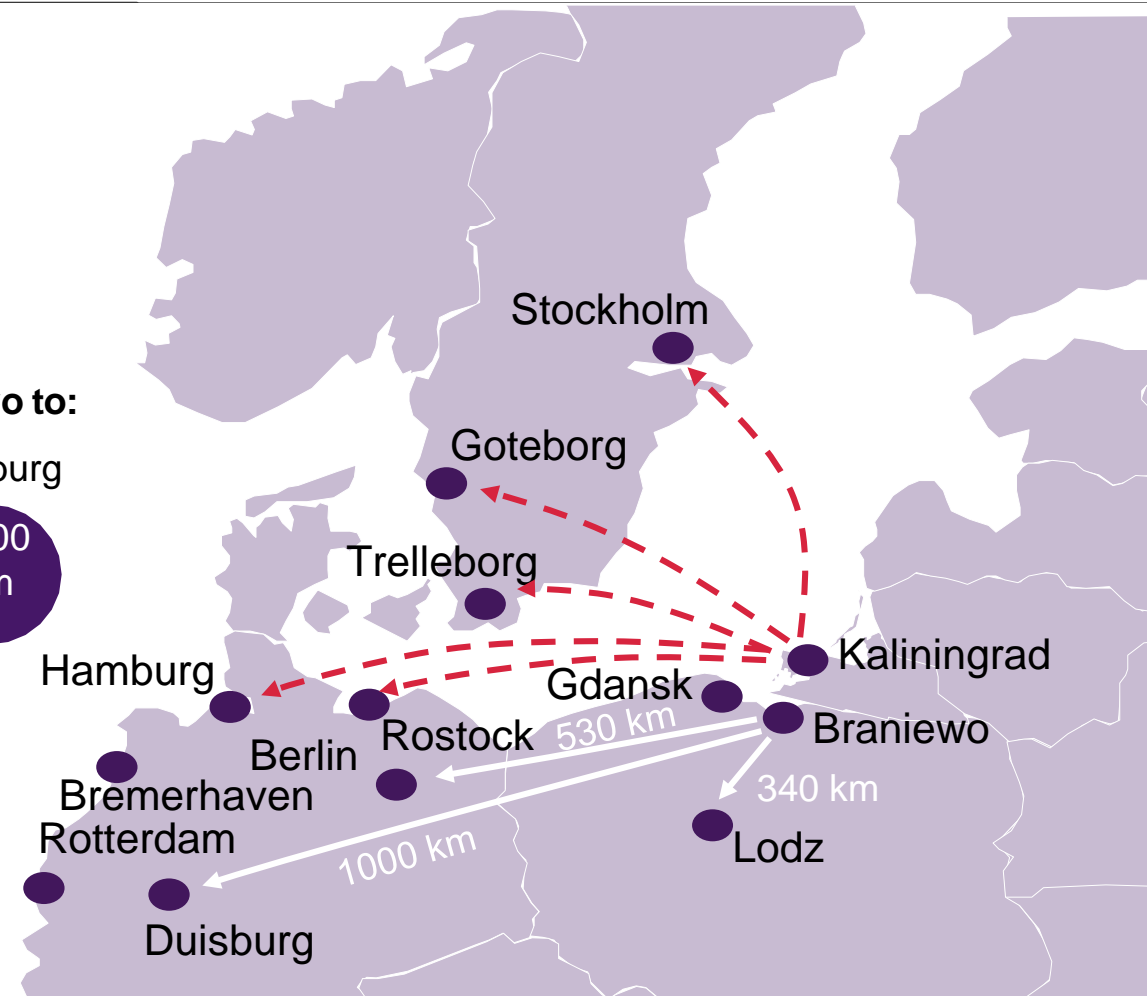
**Transit time from Kaliningrad sea port:**



**Rail distance from station Braniewo to:**



November 2, 2018 from the port of Kaliningrad through the Dostyk station to Chengdu JSC UTLC ERA sent two trains, which arrived by sea from Rotterdam, in the frame of multimodal transportation project.



# PRICING POLICY OF UTLC ERA

1. Openness, transparency, competitiveness.
2. December, 1 – announcement of prices for the 1q 2019

## Goals:

1. Creating the best pricing terms in the rail corridor  
Kazakhstan – Russia – Belarus.
2. Pricing policy is based on the principle: the lowest rate  
to the largest volumes of containers.

## UTLC ERA RATE

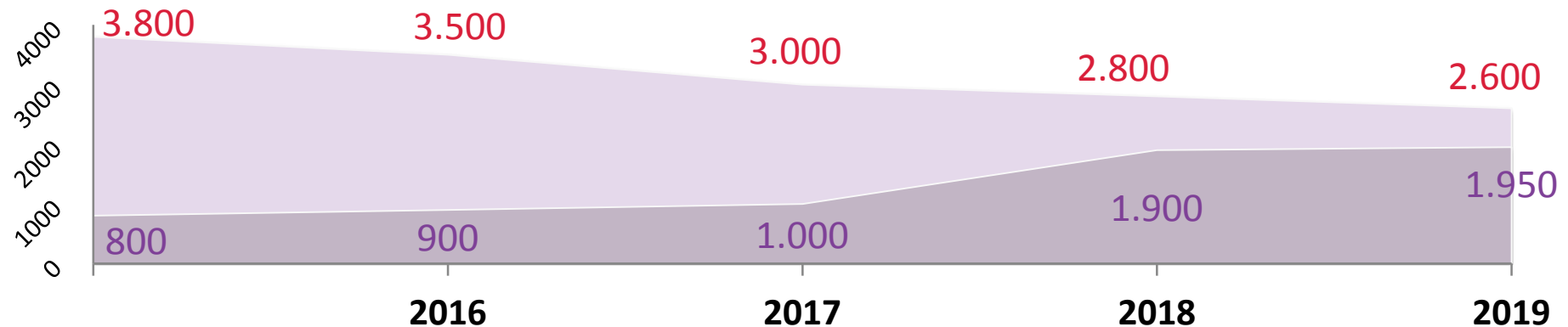
Terminal-Terminal

## WORLD CONTAINER INDEX

(Drewry)

Port-Port

\* This level of the rate for new cargo flows China-EU > 30 thousand teu/month





# ERAI – RAILWAY TRANSIT PRICE INDEX 1520

[www.index1520.com](http://www.index1520.com)

Reflects the average cost of transporting 40' container along Eurasian rail transit corridor China – Europe by infrastructure at 1520 mm of Kazakhstan, Russia and Belarus



## Functionality:

- 1** Accessibility, transparency, competitiveness
- 2** Opportunity to plan logistic expenses
- 3** Obtaining a prompt information about the current rate of ERAI

**ERAI** - index of:  
Eurasian Rail Alliance Index

- connectivity
- partnership
- cooperation

# TO RAIL OR NOT TO RAIL?

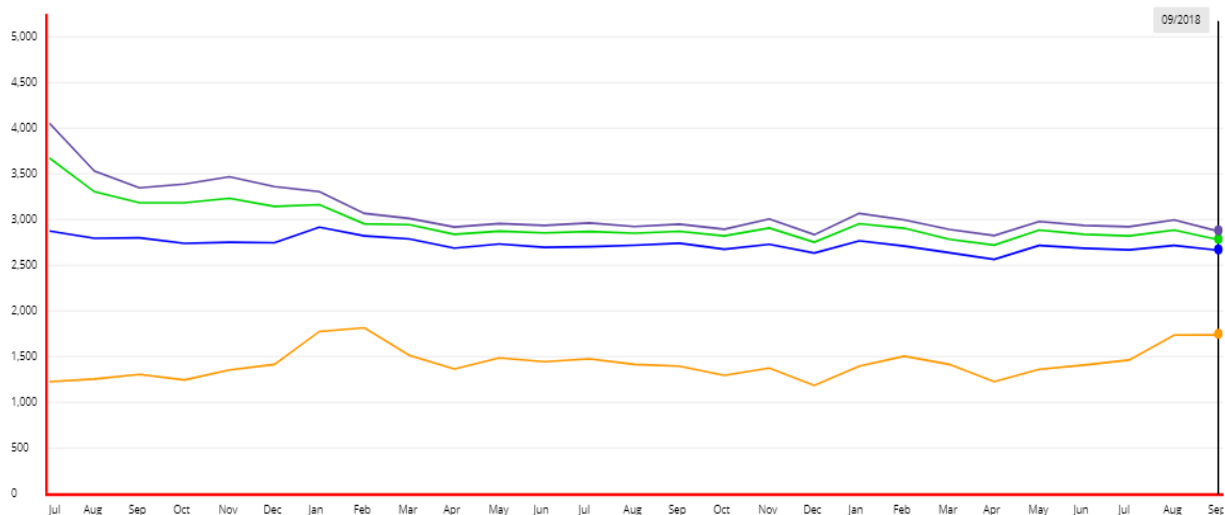
ERAI  
Eurasian Rail Alliance Index

2,783.00 USD -107 -3.70% ▼

1 Year 2 Years 3 Years 4 Years 5 Years

ERAI Composite Index ERAI U-East ERAI U-West WCI Drewry Freight turnover (x10)

Transit time  
5,5 days



ERAI U-East  
2,667.00 USD -55 -2.02% ▼

ERAI U-West  
2,875.00 USD -127 -4.23% ▼

WCI Drewry  
1,743.00 USD +3 +0.17% ▲

Freight turnover (x10)  
27,680 TEU -470 -1.67% ▼

## Main parameters of the index

Index measurement unit

USD/FEU

Routes

Dostyk/Altynkol –  
Brest/Bruzhi/Svislach/Kaliningrad

Index operator

JSC UTLC ERA

Update period

Monthly

Transit time

5,5 days  
target for 2025 – 3,5 days

Average travelling speed

930 – 1 020 km/day,  
target for 2020 – 1 500 km/day

Update procedure

Analytics publication in English,  
Russian and Chinese

# TO RAIL! UTLC ERA ROAD MAP

We declare 2019 the year of **sustainable connectivity**



# OPERATIONAL PLAN FOR ONE MILLION CLUB

---

- Common operational targets
- Technological interoperational adjustments at the borders
- Synchronized infrastructure development
- Mutual speed increasing
- Digitalization

**UTLC**

Eurasian  
Rail Alliance

**#ENJOYTHERAIL**